



## ARF 101 Flow-Through Fitting

**PVC flow-through fitting for direct mounting of a 12-mm sensor**

Easy mounting with adhesive sleeve, directly in the pipeline. For all sensors with Pg 13.5 connection, 12 mm diameter, and 120 mm length.

### Facts

- material: PVC
- DN 50 adhesive sleeve
- for sensors with Pg 13.5 connection

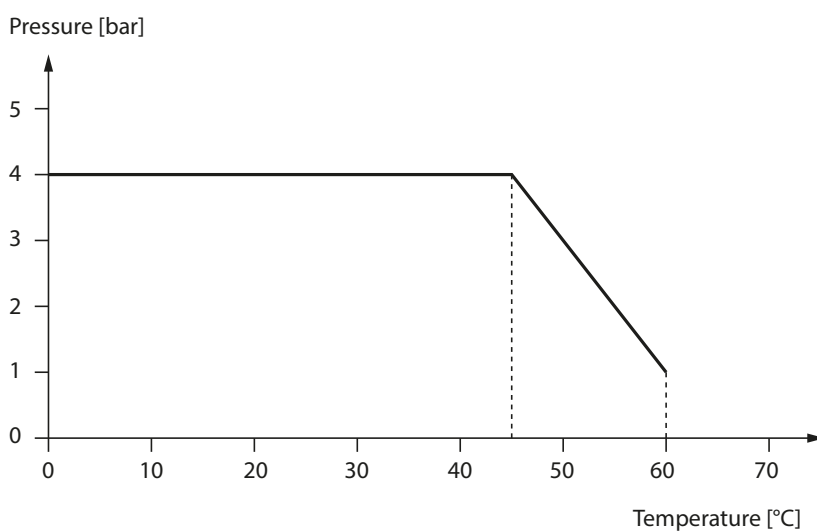
### Applications

industrial water, surface water, water processing; clean to moderately polluted waters

### Specifications

Material	PVC
Process wetted gaskets	50 mm
Process connection	DN 50 (d = 63 mm) adhesive sleeve
Pressure	4 bars (45 °C), 1 bar (60 °C)
Temperature	max. 60 °C
Sensor locations	1 x PG13,5
Sensors	PG 13,5, L = 120 mm

### Pressure/Temperature Diagram



# ARF 101 Flow-Through Fitting

**Product Line**

**Fittings**

ARF 101 Flow-Through Fitting      incl. connector and adhesive sleeve

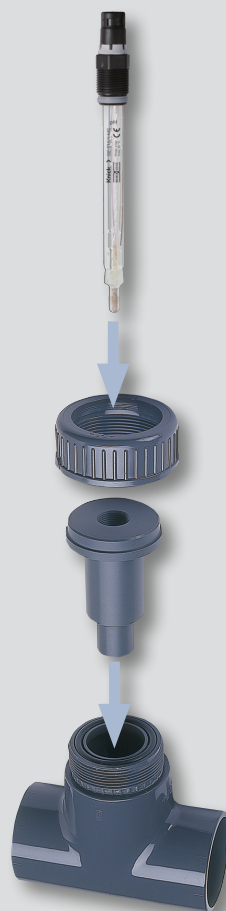
**Order No.**

**ARF 101**

**Modular System**

This flow-through fitting is available complete with sensor adaptor and adhesive sleeve.

12-mm sensors with Pg 13.5 connection and 120 mm length



Sensor adapter  
1 x Pg 13.5

Process connection:  
DN 50 adhesive sleeve

**Dimension Drawing**

